



P SLABS (M) SDN BHD

(MEMBER OF PROVEN HOLDING)



400 MM (W) X 50 MM (THK) X UP TO 5M (LENGTH)
400 MM (W) X 75 MM (THK) X UP TO 7M (LENGTH)

PRODUCT DESCRIPTION

PROVEN PRESTRESSED HALF SLAB

CHARACTERISTIC:

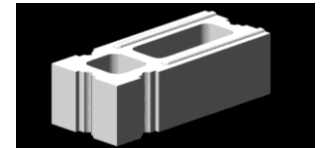
1. Certified IBS product by CIDB and SIRIM
2. Quality Control with G40 mix or G50 with high strength pre-stressed wire
3. Slab thickness is 50 mm & 75mm
4. Slab modular width is 200 mm and 400 mm
5. Slab length up to 7 metres
6. 50 mm Grade 30 structural topping with wire mesh

PROVEN ENGINEERING BLOCK

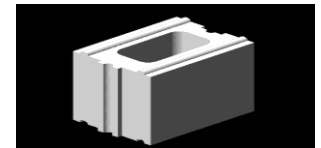
CHARACTERISTIC:

1. Engineering Load Bearing Wall
2. Certified IBS product by CIDB
3. Manufactured Average Compressive Strength is 7N/mm²
4. Two (2) hours of fire rating by SIRIM
5. Special tongue and groove features for easy installation and self alignment
6. Air gap feature for good heat and sound insulation

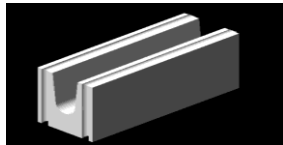
Filler Block
50 x 142 x 200 mm



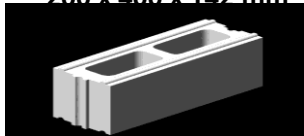
Corner Block
200 x 342 x 142 mm



Half Block
200 x 200 x 142 mm



Bond Beam Block
200 x 400 x 142 mm



Stretcher Block
200 x 400 x 142 mm

PROVEN INTERLOCKING CONCRETE BRICK

CHARACTERISTIC:

1. Infill wall and partially load bearing wall system
2. Weight per brick ~ 4 kg
3. Two (2) hours of fire rating by SIRIM
4. Special tongue and groove features for easy installation and self alignment



Service Brick
100 x 100 x 200 mm



Full Brick
100 x 100 x 200 mm



FACTORY PRODUCTION

PROVEN PRESTRESSED HALF SLAB



STEP 1
PRESTRESSED CONCRETE HALF SLAB CAST
ON THE BEAM

1. Check the level and and set the required measurement on cast-in-situ beam prior to the installation of the prestressed Concrete Half Slab.



2a. If the span of the Prestressed Concrete Half slab is longer than 2 meters, it needs to be supported in the middle (normally with 2 inch x 4 inch hardwood timber).

2b. If the span is longer than 3 meters, it need to be supported at 2 points and to be positioned at one-third and two-third of the span. The top levels of the supporting hardwoods should be same level.

Note: The Prestressed Concrete Half slab at the middle or intermediate supports must be in placed before placing the planks

STEP 2

SLAB CAST TOGETHER WITH BEAM OR SHEAR WALL





P SLABS (M) SDN BHD

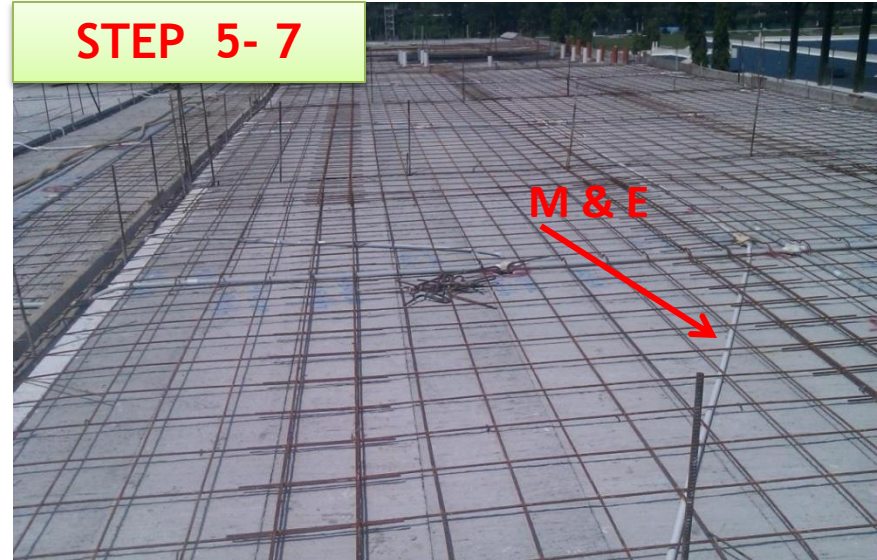
STEP 3 SLAB CAST ON READY BEAM

3. The Prestressed Concrete Half Slab is handled using a special lifting apparatus (as shown in the picture and normally 5 pcs of slabs are lifted at one time). Both ends of Prestressed Concrete Half Slab required not less than 25mm width sitting on beam and 50mm width on block walls.

STEP 3



- 5) Install M & E piping and slab opening.
- 6) Installed BRC (as specified by Engineer) on top of Prestressed Concrete Half Slab with appropriate spacer blocks.
- 7) Inspection and approval from COW before concreting.



- 8) Before the concrete are pour on the Prestressed Concrete Half Slab, boards are put on the planks for walking or working on the concrete.
- 9) Surface of Prestressed Concrete Half Slab must be clean by spraying water or using high pressure water jet until the Prestressed Concrete Half Slab surface is wet.
- 10) Then pour the topping concrete on the top of the Prestressed Concrete Half Slab until thickness of topping is 5 cm or as specified in drawing.

STEP 8-10





11) After the topping concrete set, cure the concrete for at least 3 days.

STEP 11 - 12



STEP 13

**REPEAT STEP 2 FOR
THE NEXT
PRESTRESSED
CONCRETE HALF SLAB**



PRODUCT CERTIFICATION

1. CIDB MALAYSIA - IBS STATUS

2. SIRIM PRODUCT CERTIFICATION LICENCE



DETAILS DRAWING FOR PRESTRESSED CONCRETE HALF SLAB



P SLABS (M) SDN BHD

PROJECTS USING PRESTRESSED HALF SLAB & INTERLOCKING BLOCK & BRICK

PROVEN IBS HYBRID SYSTEM UNICITI ALAM – PERLIS

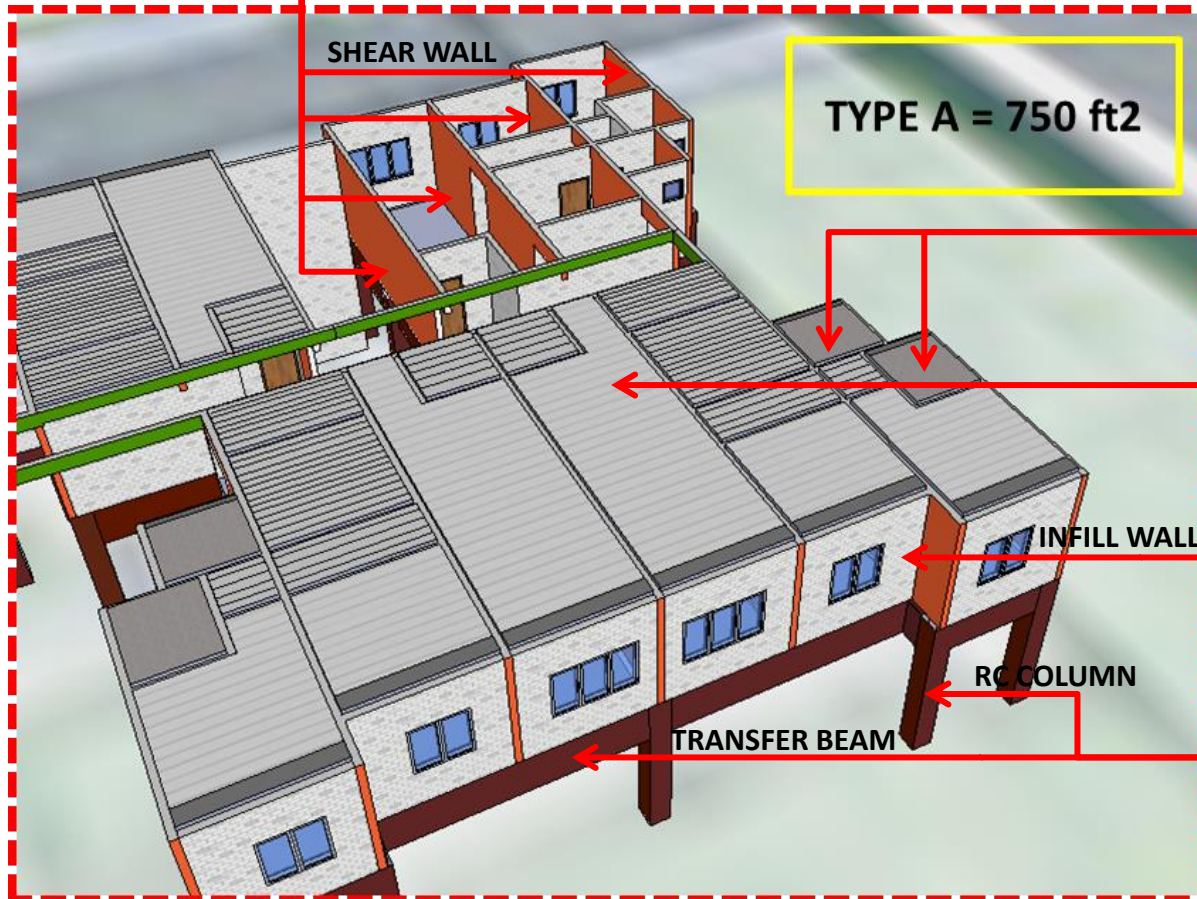


Plastic Formwork



Metal Formwork

Either one



**In – situ RC slab
(for toilet area)**



Prestressed Precast Half Slab



Interlocking Brick



Special formwork for beam & column



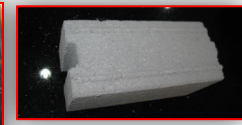
Prestressed Precast Half Slab



Metal Formwork



Plastic Formwork



Interlocking Brick





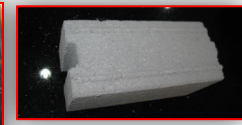
Prestressed Precast Half Slab



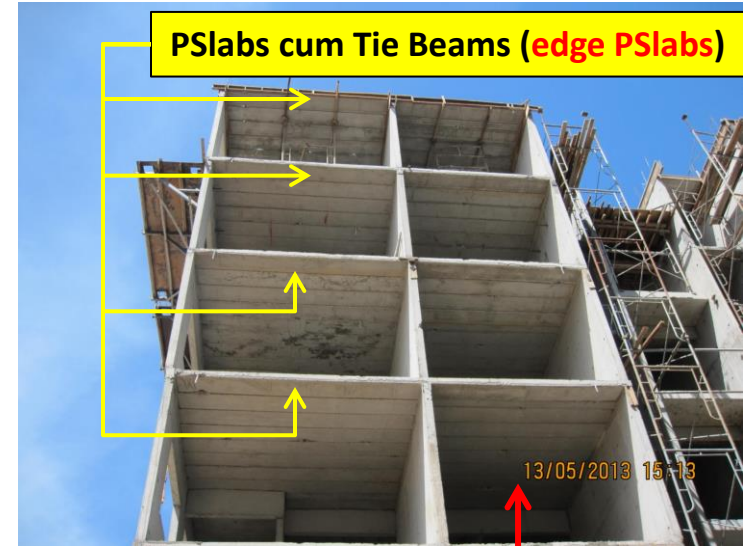
Metal Formwork



Plastic Formwork



Interlocking Brick





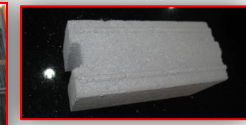
Prestressed Precast Half Slab



Metal Formwork



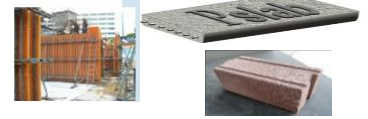
Plastic Formwork



Interlocking Brick



PROVEN INTERLOCKING CONCRETE BRICKS **(for infill walls)**



**Interlocking
Brick
- laid with
adhesive
mortar**



**P-SLAB
PLANK
with RC
Topping**



The Z Residence @ Bukit Jalil

PROVEN IBS COMPONENTS



Komponen PROVEN IBS yang
di pakaiguna untuk pembinaan bangunan
Z Residence @ Bukit Jalil



Prestressed Precast Half Slab

Interlocking Brick



25 to 27 Storeys (excluding 5 levels podium /car park)





Prestressed Precast Half Slab



Interlocking Brick



Antara Gapi - 22 Units Shop Lot



Taman Keruing Rasa – 2 Blocks Apartment



Antara Gapi - 80 Units Terrace House



TAMIL SCHOOL AT PAGOH, JOHOR

INSTALLATION OF PRESTRESSED HALF SLAB

PREPARATION OF BEAM TO RECEIVE THE PRESTRESSED HALF SLAB



INSTALLATION OF PRESTRESSED HALF SLAB



PRESTRESSED HALF SLAB READY FOR M & E AND CONCRETING



PREPARATION OF PROP FOR PRESTRESSED HALF SLAB



PREPARATION OF PROP FOR PRESTRESSED HALF SLAB



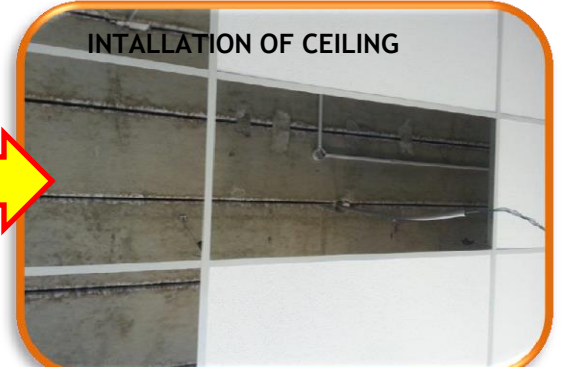
GROUTING OF GROOVE LINE



SOFTFIT OF SLAB AFTER GROUTING OF GROOVE LINE



INTALLATION OF CEILING



USING PRESTRESSED HALF SLAB AS GROUND FLOOR SLAB





P SLABS (M) SDN BHD

THANK YOU